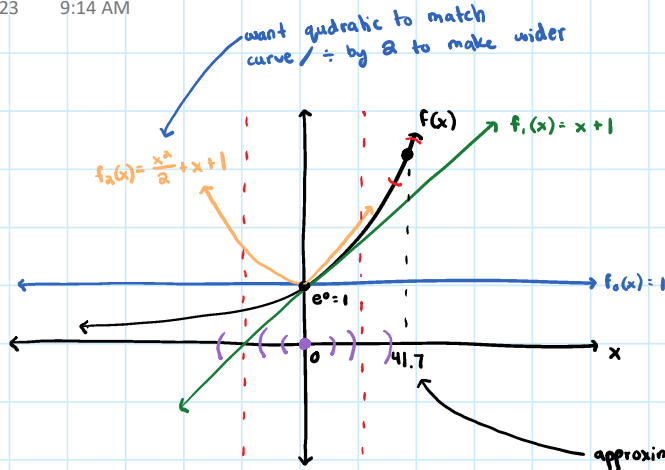


Sequence & Series Example

Monday, April 3, 2023 9:14 AM

ex) $f(x) = e^x$



- truly only good approximation for one point
- better approximation / still off at some points
- even better approximation for right side
- can test how far approximation goes / where radii converges (has limit)

approximation here most likely different than $x=0$ / need different $f(x)$ approximation

* polynomial is more than one piece of graph or function / need approximation close to whole or part of function *